



PREMIER

MANUFACTURING



166
Receiver

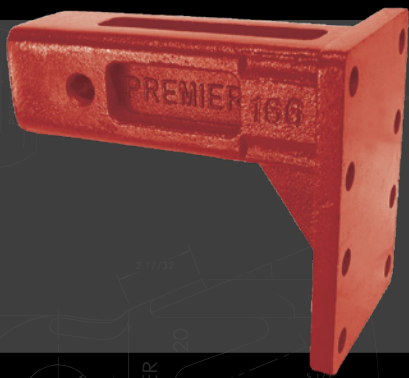
UNSURPASSED QUALITY



WE'RE PULLING FOR YOUR SUCCESS

166 Receiver

- Cast piece
- 2-1/2" Connection
- Adjustable mounting holes for hitch heights
- Unsurpassed Premier quality



166 RECEIVER

Max Gross Trailer Weight: 12,000 lbs.* (5,433 kg)

Max Tongue Weight: 1,200 lbs.* (544 kg)

Pin Diameter: 5/8 in (16mm)

*Stated capacities to be reduced accordingly if receiver receptacle unit has less capacity.



PREMIER MANUFACTURING
 19500 SW Teton Avenue • Tualatin, OR 97062
 (800) 255-5387 or (503) 234-9202
 www.PREMIER-MFG.com

Sales Flyer # 106052