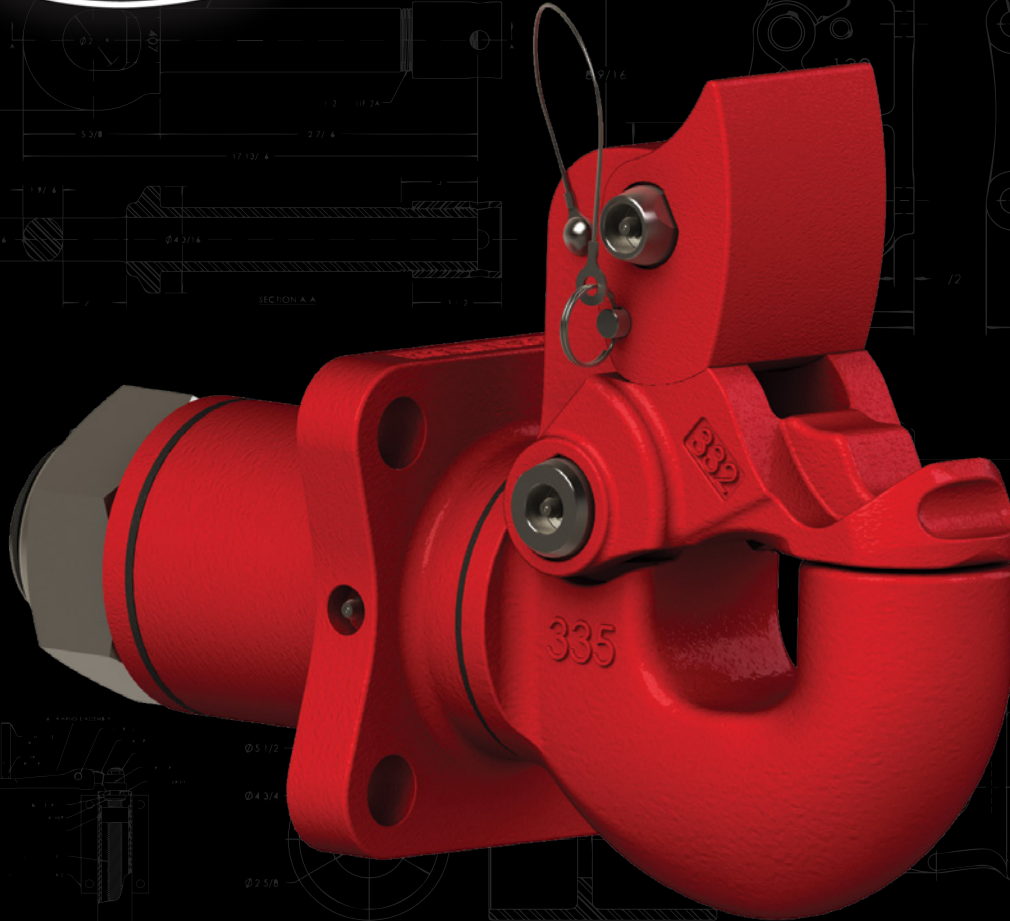




# PREMIER

## MANUFACTURING

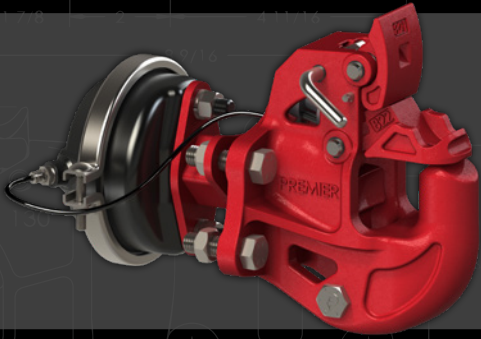


# INNOVATIVE PRODUCT DESIGNS



**PREMIER**  
MANUFACTURING

# WE'RE PULLING FOR YOUR SUCCESS



## Model 820ELA

### Patented Hitch Safeguard

SAF-T-LATCH Technology Fail-Safe

Extended Life Latch Lubrication

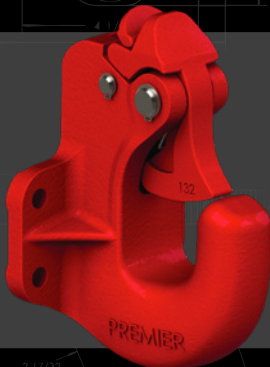
Max Gross Trailer Weight: 100,000 lbs. (45,359 kg)

Maximum Tongue Weight: 20,000 lbs. (9,072 kg)

Ultimate Latch Capacity: 60,000 lbs. (27,216 kg)



**SAF-T-LATCH**



## Model 240

### High Capacity, Compact Coupling

Premalloy Work-Hardening

Compact & Low Profile

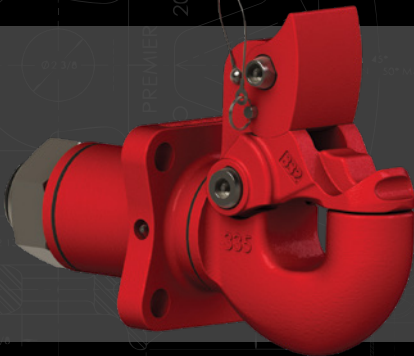
MGTW with Drawbar Eye: 45,000 lbs. (20,411 kg)

Maximum Tongue Weight: 6,000 lbs. (2,721 kg)

Ultimate Latch Capacity: 20,000 lbs. (9,071 kg)



**PREMALLOY**



## Model 335NTEL

### The Rhino of Swivel Couplings

Swivel Design

High Capacity MGTW

Extended Life Latch Lubrication

Max Gross Trailer Weight: 110,000 lbs. (49,895 kg)

Maximum Tongue Weight: 20,000 lbs. (9,071 kg)

Ultimate Latch Capacity: 65,000 lbs. (29,484 kg)



**EXTENDED LIFE**



**HIGH BAR  
BRANDS**



**PREMIER MANUFACTURING**  
19500 SW Teton Avenue • Tualatin, OR 97062  
(800) 255-5387 or (503) 234-9202  
[www.PREMIER-MFG.com](http://www.PREMIER-MFG.com)

Sales Flyer # 106057