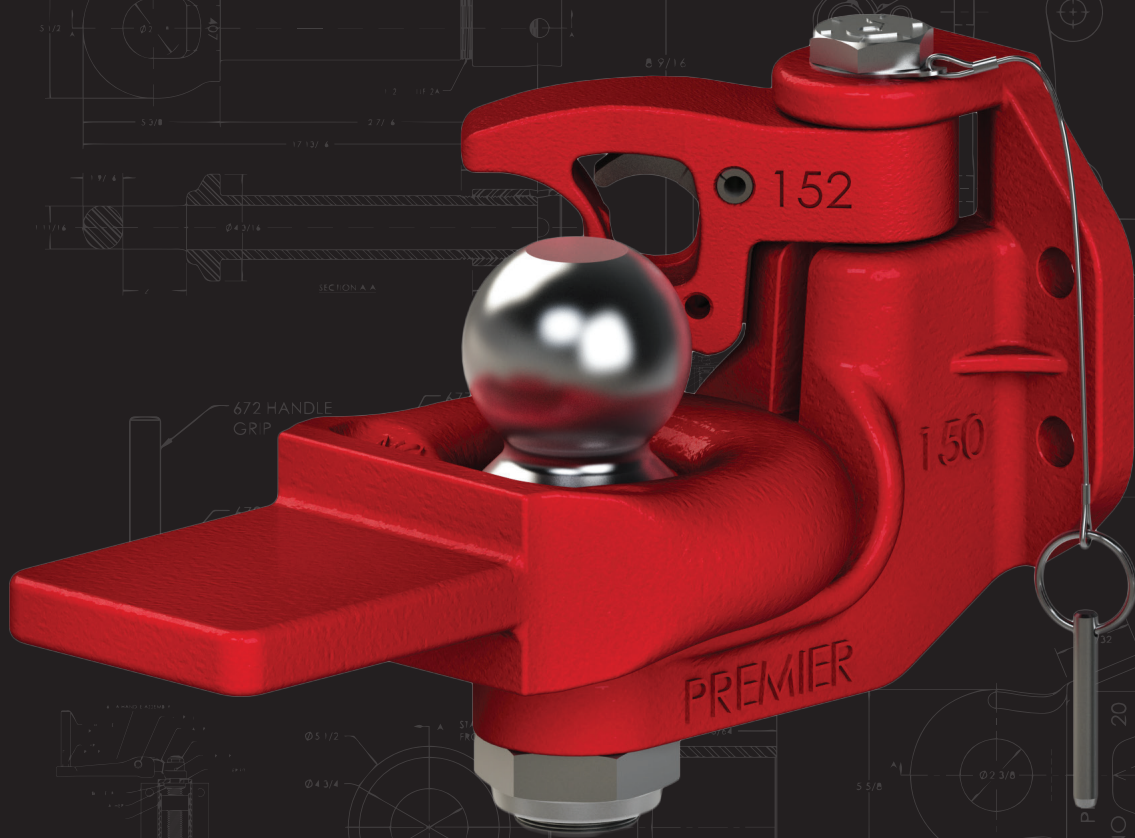




**PREMIER**  
MANUFACTURING



**PATENTED  
SWING  
LATCH  
TECHNOLOGY**

**PREMIER-MFG.COM | 800.255.5387 | PULLING FOR YOUR SUCCESS**



# WE'RE PULLING FOR YOUR SUCCESS

**FROM THE LEADER IN CLASS 8 COMPONENTS  
GET PREMIER QUALITY & SAFETY  
IN A UTILITY SIZED PACKAGE.**

## KEY FEATURES

- Stout product in a modest size
- Light to medium duty towing capacities
- Compact, low profile with trigger latch system
- Swing latch rotates sideways, out of the way, in either direction
- Perfect coupling for utility type applications
- Dependable, durable, competent
- Impressive, superior quality



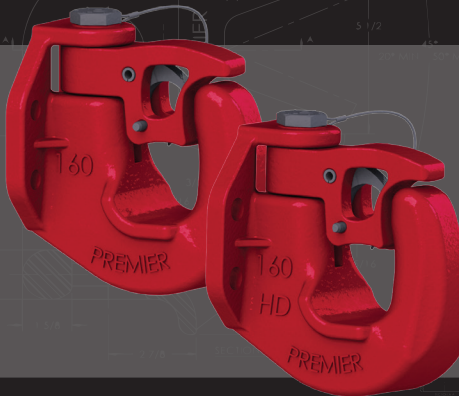
## MODEL 150

MGTW with Drawbar Eye: 20,000 lbs. (9,072 kg)  
MGTW with 155 or 156 Ball: 10,000 lbs. (4,535 kg)  
Maximum Tongue Weight: 2,500 lbs. (1,134 kg)  
Ultimate Latch Capacity: 5,000 lbs. (2,267 kg)  
Maximum Eye X-Section: 1 13/16 in. (46 mm)  
Minimum Eye Opening: 2 3/8 in. (60 mm)  
Unit Weight: 15 lbs. (6.8 kg)

Model 150:  
150 Coupling & 155 Ball  
(2 in. diameter)

Model 150-1:  
150 Coupling & 156 Ball  
(2 5/16 in. diameter)

150 is a combo, multipurpose coupling, for use with a drawbar eye or a ball coupler connection.



## MODEL 160

Max Gross Trailer Weight: 30,000 lbs. (13,607 kg)  
Maximum Tongue Weight: 4,500 lbs. (2,041 kg)  
Ultimate Latch Capacity: 5,000 lbs. (2,267 kg)  
Maximum Eye X-Section: 1 13/16 in. (46 mm)  
Minimum Eye Opening: 2 in. (51 mm)  
Unit Weight: 14 lbs. (6.4 kg)

- Uses 1/2" mounting holes

## MODEL 160HD

Max Gross Trailer Weight: 40,000 lbs. (18,144 kg)  
Maximum Tongue Weight: 6,500 lbs. (2,948 kg)  
Ultimate Latch Capacity: 5,000 lbs. (2,267 kg)  
Maximum Eye X-Section: 1 13/16 in. (46 mm)  
Minimum Eye Opening: 2 in. (51 mm)  
Unit Weight: 14.4 lbs. (6.5 kg)

- Uses 9/16" mounting holes

A DIVISION OF **HIGH BAR BRANDS, LLC**



# HIGH BAR BRANDS

19500 SW TETON AVENUE TUALATIN, OR 97062

(503) 234-9202 | (800) 255-5387

[www.highbarbrands.com](http://www.highbarbrands.com)

Sales Flyer #106051