



# PREMIER

## MANUFACTURING



# 166

Receiver

# UNSURPASSED QUALITY

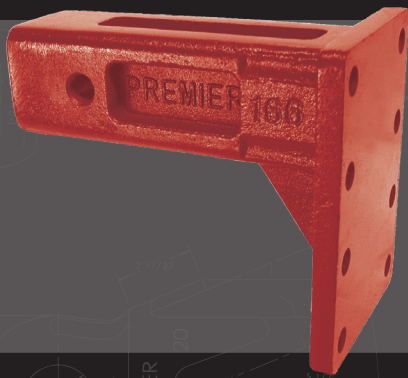
[PREMIER-MFG.COM](http://PREMIER-MFG.COM) | 800.255.5387 | PULLING FOR YOUR SUCCESS



# WE'RE PULLING FOR YOUR SUCCESS

## 166 Receiver

- Cast piece
- 2-1/2" Connection
- Adjustable mounting holes for hitch heights
- Unsurpassed Premier quality



### 166 RECEIVER

Max Gross Trailer Weight: 12,000 lbs.\* (5,433 kg)

Max Tongue Weight: 1,200 lbs.\* (544 kg)

Pin Diameter: 5/8 in (16mm)

\*Stated capacities to be reduced accordingly if receiver receptacle unit has less capacity.

A DIVISION OF **HIGH BAR BRANDS, LLC**



## HIGH BAR BRANDS

19500 SW TETON AVENUE TUALATIN, OR 97062

(503) 234-9202 | (800) 255-5387

[www.highbarbrands.com](http://www.highbarbrands.com)

Sales Flyer #106052