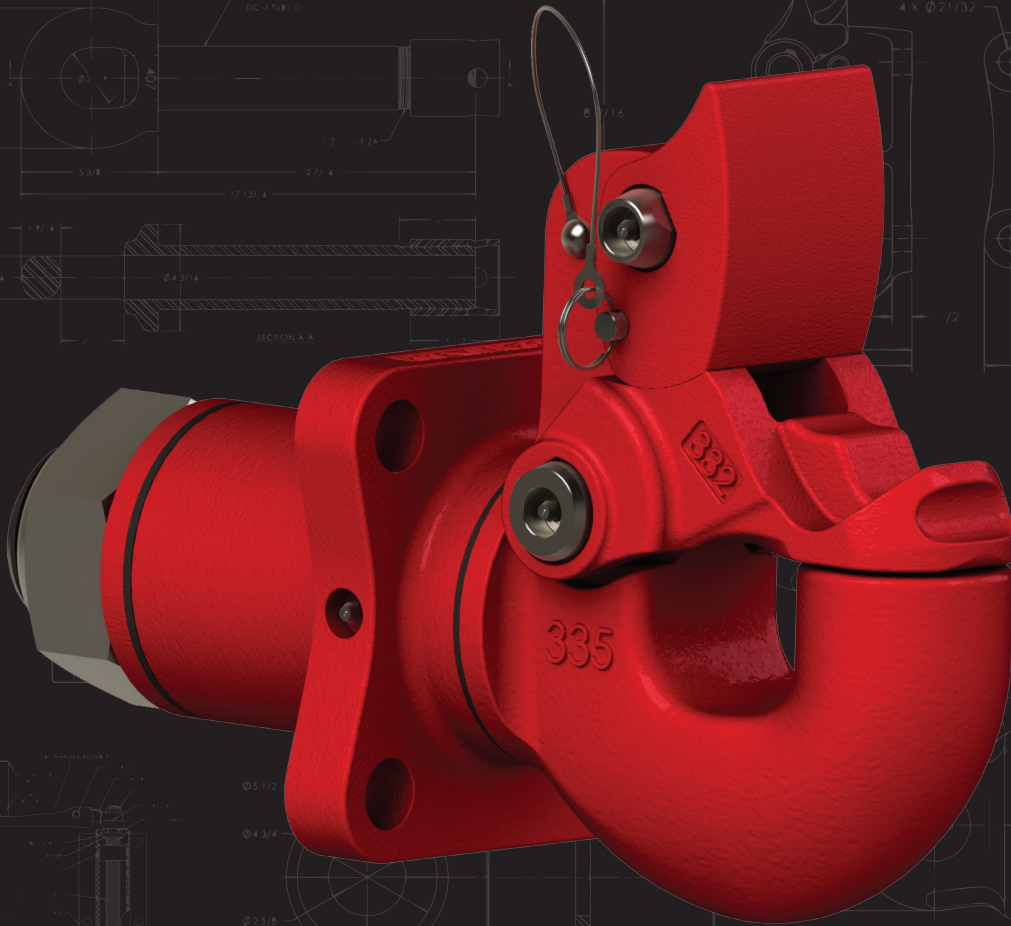




PREMIER
MANUFACTURING

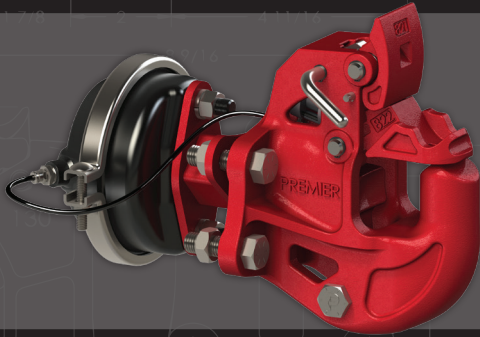


**INNOVATIVE
PRODUCT
DESIGNS**

PREMIER-MFG.COM | 800.255.5387 | PULLING FOR YOUR SUCCESS



WE'RE PULLING FOR YOUR SUCCESS



Model 820ELA

Patented Hitch Safeguard

SAF-T-LATCH Technology Fail-Safe

Extended Life Latch Lubrication

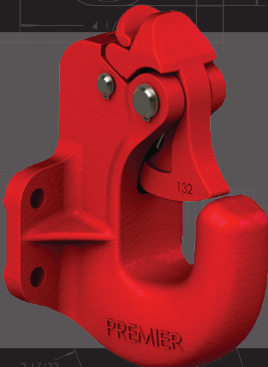
Max Gross Trailer Weight: 100,000 lbs. (45,359 kg)

Maximum Tongue Weight: 20,000 lbs. (9,072 kg)

Ultimate Latch Capacity: 60,000 lbs. (27,216 kg)



SAF-T-LATCH



Model 240

High Capacity, Compact Coupling

Premalloy Work-Hardening

Compact & Low Profile

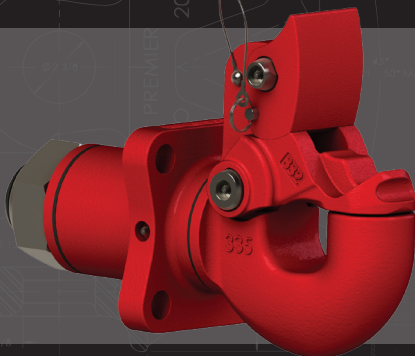
MGTW with Drawbar Eye: 45,000 lbs. (20,411 kg)

Maximum Tongue Weight: 6,000 lbs. (2,721 kg)

Ultimate Latch Capacity: 20,000 lbs. (9,071 kg)



PREMALLOY



Model 335NTEL

The Rhino of Swivel Couplings

Swivel Design

High Capacity MGTW

Extended Life Latch Lubrication

Max Gross Trailer Weight: 110,000 lbs. (49,895 kg)

Maximum Tongue Weight: 20,000 lbs. (9,071 kg)

Ultimate Latch Capacity: 65,000 lbs. (29,484 kg)



EXTENDED LIFE

A DIVISION OF **HIGH BAR BRANDS, LLC**



HIGH BAR BRANDS

19500 SW TETON AVENUE TUALATIN, OR 97062

(503) 234-9202 | (800) 255-5387

www.highbarbrands.com

Sales Flyer #106057