

OUT WORK.
OUT PLAY.
OUT DRIVE.
OUT LAST.
OUT SHINE.

 **DIETER'S**
Our Reputation is Stainless!

304 NON-MAGNETIC AND NON-CORRODING STAINLESS STEEL
PROFESSIONAL ACCESSORIES FOR PROFESSIONAL DRIVERS



MACK ACCESSORIES CATALOG

VOLUME XII

CONTENTS

Lights, Harnesses & Bezels	4
Mack Anthem	5-10
Additional Accessories	11-18
Bug Deflectors	12
Fender Guards	13
Sunvisors	14
Kick Plates	15
Rear Frame Covers	16
Heat Shield Caps	16
License Plate Holders	17
Door Window Deflectors	17
Door Window Shades	17
Trim Accents	18
Poster Program	19

.....

Dieter's has been manufacturing high quality truck accessories since 1976! Our legacy started with a highly skilled tradesman and a few close friends who felt their trucks deserved that custom touch. Fast forward 40 years, and Dieter's has become the largest, most trusted and most OEM awarded name in high quality stainless steel accessories for today's Big Rigs. Our truck accessories don't just belong in show-and-shines, they belong on the highways and backroads of North America.

WHAT'S THIS MEAN FOR YOU?

Listening to the customer and delivering a product that is worthy of your hard earned dollars. Dieter's has become the high quality accessory manufacturer of choice for North America's heavy truck OEM's. We use only the highest quality, non-magnetic 304 stainless steel and back it up with award winning customer service. In fact, we are so confident in our products, we stand behind them for a full two years. Try finding that with one of our competitors!

THE RESULT?

Highest quality stainless steel accessories available at over 2,000 dealerships throughout North America. Outwork, Outplay, Outlast with our high quality custom products for today's professional drivers.

WELCOME TO
THE BIG LEAGUES OF
TRUCK ACCESSORIES



Our Reputation is Stainless!



**CRAFTED IN
NORTH AMERICA**

.....
2 YEAR WARRANTY ON ALL PRODUCTS
.....

**OUT WORK.
OUT PLAY.
OUT DRIVE.
OUT LAST.
OUT SHINE.**

CUSTOMER SERVICE CONTACT

**TOLL FREE:
1-877-884-8555**

ONLINE AT:
www.dietersaccessories.com

EMAIL US AT:
inquiries@dietersaccessories.com



CHROMED PLASTIC LIGHT BEZELS

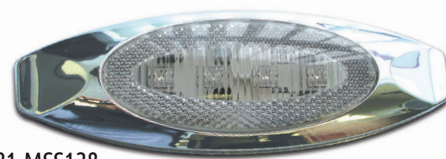
Add that finished chrome look to your round and oval lights. Available with or without visor. Sold individually.

WITHOUT VISOR

2" ROUND	3281-MSS DMOLB
2" ROUND BULK PACK (50)	3281-MSSDMOLBBP
M1 BEZEL ONLY	7139-00212327*
M5 BEZEL ONLY	7139-00212727*
3/4" ROUND BEZEL ONLY (10 PIECES)	7139-00212904*

WITH VISOR

2" ROUND WITH VISOR	3281-MSSDMOLBV
2" ROUND WITH VISOR BULK PACK (50)	3281-MSSDMOLBVBP



3281-MSS128

LIGHT TYPES

Hardware included. Sold individually.

X2AG2 LED & BEZEL

AMBER (X2AG2)	3281-MSS127
AMBER CLEAR (X2ACG2)	3281-MSS128

DRIVING & FOG LAMPS

REPLACEMENT DRIVING LAMP	3281-MSS240
REPLACEMENT FOG LAMP	3281-MSS239

M1 LED - .180 BULLETS & BEZEL

M1 AMBER LED	7139-00212335*
M1 AMBER CLEAR LED	7139-00212336*

M1 LED - .180 BULLETS & NO BEZEL

M1 AMBER LED	7139-00212355*
M1 AMBER CLEAR LED	7139-00212356*

M5 LED - .180 BULLETS & BEZEL

M5 AMBER LED	7139-00212704*
M5 AMBER CLEAR LED	7139-00212706*

M5 LED - .180 BULLETS & NO BEZEL

M5 AMBER LED	7139-00212708*
M5 AMBER CLEAR LED	7139-00212710*

3/4" ROUND LED - .180 BULLETS WITH GROMMET & BEZEL

3/4" ROUND AMBER LED	7139-00212900*
3/4" ROUND AMBER CLEAR LED	7139-00212901*

3/4" ROUND LED - .180 BULLETS WITH GROMMET (FOR USE IN UNDERLIT PRODUCT)

3/4" ROUND AMBER CLEAR LED	7139-00212906*
----------------------------	----------------



CLOSE UP OF PLUGS



CONTINUOUS WIRING

Bulk wiring harness by the roll. Available in 6" spacing (200 plugs) or 12" spacing (100 plugs).

6" PLUG SPACING (200 PLUGS)	3281-MSS0100
12" PLUG SPACING (100 PLUGS)	3281-MSS0101

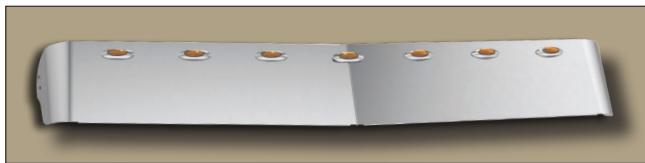
M
A
C
K

A
N
T
H
E
M





3281-MSS251



3281-MSS260

SUNVISORS

There are lots of places you want to soak in the sun - but your cab isn't one of them. Our extended sunvisors help keep the cab cooler while reducing eye strain. OEM replacement, made of durable stainless steel. Uses OEM mounting holes - no drilling required. Brackets and hardware included. NOT COMPATIBLE WITH REDESIGNED MACK ANTHEM (PRODUCTION BEGINNING JANUARY 2026)

3/4" ROUND AMBER LED - 12"	3281-MSS252
3/4" ROUND AMBER CLEAR LED - 12"	3281-MSS251
M5 AMBER LED - 12"	3281-MSS260
M5 AMBER CLEAR LED - 12"	3281-MSS261



3281-MSS251



3281-MSS249 (EXTENDED VERSION)

BUG DEFLECTOR

Helps protect the hood and windshield from rocks and road debris. Mounts behind grille. Drilling of mounting holes required. All mounting hardware included. Constructed of high-quality 304 stainless steel. LIFETIME GUARANTEE AGAINST BREAKAGE.

MACK ANTHEM BUG DEFLECTOR NOT COMPATIBLE WITH REDESIGNED MACK ANTHEM (PRODUCTION BEGINNING JANUARY 2026) 3281-MSS248

MACK ANTHEM BUG DEFLECTOR - EXTENDED (USE WITH 3281-MSS253) 3281-MSS249
NOT COMPATIBLE WITH REDESIGNED MACK ANTHEM (PRODUCTION BEGINNING JANUARY 2026)



3281-MSS248



FENDER GUARDS

The best defense against road debris and the effects of high mileage wear and tear. Fill the gap between the headlight and the grille. Attach using supplied hardware. Sold in pairs. NOT COMPATIBLE WITH REDESIGNED MACK ANTHEM (PRODUCTION BEGINNING JANUARY 2026)

MACK ANTHEM

3281-MSS253



3281-MSS258



3281-MSS257

DOOR WINDOW ACCENT

Accentuates the contour of the window. Sold in pairs. Attaches with supplied 3M two-sided tape. NOT COMPATIBLE WITH REDESIGNED MACK ANTHEM (PRODUCTION BEGINNING JANUARY 2026)

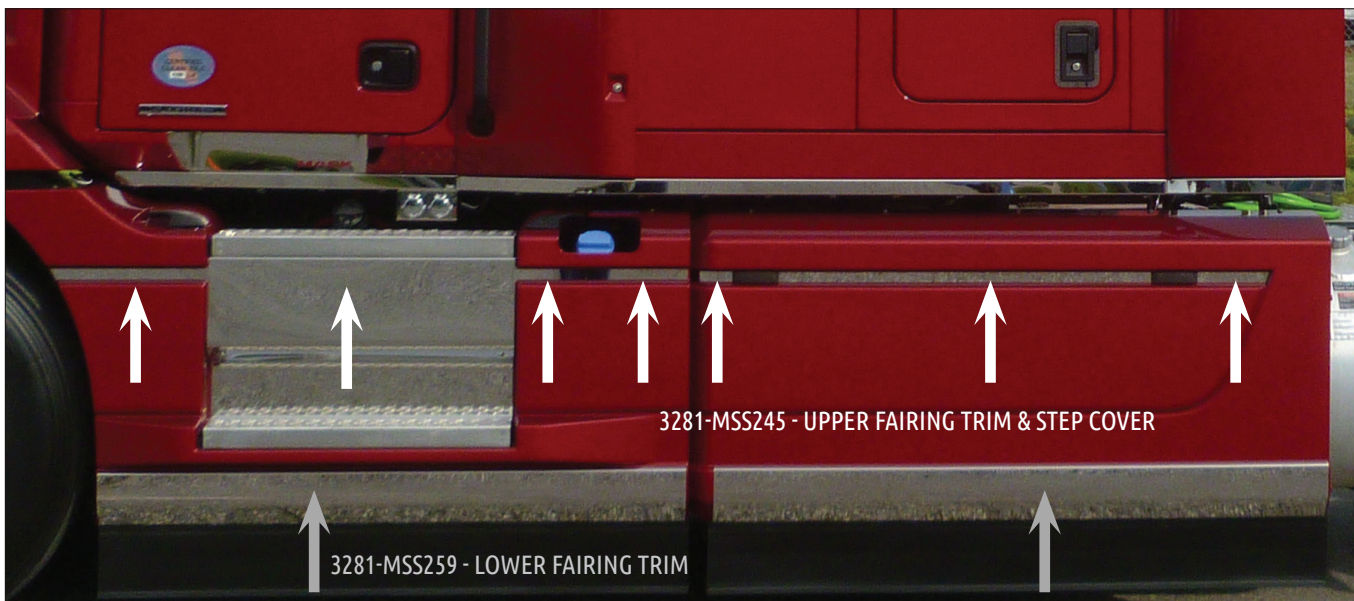
PLAIN	3281-MSS257
LOGO CUTOUT	3281-MSS258



DOOR WINDOW SHADE

Attaches using supplied 3M two-sided tape and optional hardware. Sold in pairs. NOT COMPATIBLE WITH REDESIGNED MACK ANTHEM (PRODUCTION BEGINNING JANUARY 2026)

MACK ANTHEM, CH, GRANITE & VISION MODELS	3281-MSS171
--	-------------



3281-MSS245 - UPPER FAIRING TRIM & STEP COVER

3281-MSS259 - LOWER FAIRING TRIM

FAIRING TRIM SETS

Attaches using supplied 3M two-sided tape. Sold in sets. NOT COMPATIBLE WITH REDESIGNED MACK ANTHEM (PRODUCTION BEGINNING JANUARY 2026)

UPPER FAIRING SET - TRIM PIECES (12) WITH STEP COVER (3281-MSS256)	3281-MSS245
LOWER FAIRING SET - 4 PIECES	3281-MSS259

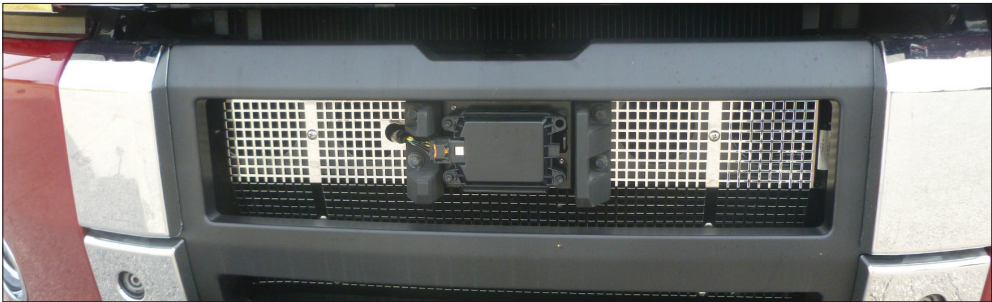


3281-MSS241

KICK PANELS

Fits on rocker panel below the cab doors. Fastens using supplied hardware and 3M two-sided tape. Sold in pairs.

WITH LOGO CUTOUT NOT COMPATIBLE WITH REDESIGNED MACK ANTHEM (PRODUCTION BEGINNING JANUARY 2026)	3281-MSS241
WITH ETCHED LOGO NOT COMPATIBLE WITH REDESIGNED MACK ANTHEM (PRODUCTION BEGINNING JANUARY 2026)	3281-MSS235



BUMPER SCREEN

A stainless steel replacement for the OEM version. Sold individually. Hardware included. NOT COMPATIBLE WITH REDESIGNED MACK ANTHEM (PRODUCTION BEGINNING JANUARY 2026)

MACK ANTHEM BUMPER SCREEN	3281-MSS254
---------------------------	-------------



STEP COVER

Protect the paint from scuffs and scratches. Attaches using supplied 3M two-sided tape and hardware.

MACK ANTHEM NOT COMPATIBLE WITH REDESIGNED MACK ANTHEM (PRODUCTION BEGINNING JANUARY 2026)	3281-MSS256
--	-------------



WINDOW TRIM

Attaches using supplied 3M two-sided tape. Sold in pairs. NOT COMPATIBLE WITH REDESIGNED MACK ANTHEM (PRODUCTION BEGINNING JANUARY 2026)

SLEEPER	3281-MSS246
---------	-------------



DOOR HANDLE TRIM

Attaches using supplied 3M two-sided tape. Sold in pairs. NOT COMPATIBLE WITH REDESIGNED MACK ANTHEM (PRODUCTION BEGINNING JANUARY 2026)

SLEEPER	3281-MSS247
---------	-------------



3281-MSS250



3281-MSS255

AIR INTAKE ACCENTS

Attaches using supplied 3M two-sided tape. NOT COMPATIBLE WITH REDESIGNED MACK ANTHEM (PRODUCTION BEGINNING JANUARY 2026)

4-PIECE SET	3281-MSS250
TRIM SET PAIR	3281-MSS255



CAB PANELS - MACK ANTHEM

3281-MSS283

Designed for 2018+ Mack Anthem models. Panels measuring 1.5" wide can be used on models with chassis fairings. Panels measuring 3" wide are for use without fairings. Hardware, lights and harnesses included. Also includes 2 block heater mounting plates. Sold in pairs. NOT COMPATIBLE WITH REDESIGNED MACK ANTHEM (PRODUCTION BEGINNING JANUARY 2026)

MEASURE 1.5" WIDE - FOR MODELS WITH CHASSIS FAIRINGS		MEASURE 3" WIDE - FOR MODELS WITHOUT CHASSIS FAIRINGS	
PLAIN	3281-MSS280	PLAIN	3281-MSS298
M5 AMBER LED (3)	3281-MSS281	M5 AMBER LED (3)	3281-MSS299
M5 AMBER CLEAR LED (3)	3281-MSS282	M5 AMBER CLEAR LED (3)	3281-MSS300
3/4" ROUND AMBER LED (6)	3281-MSS283	3/4" ROUND AMBER LED (6)	3281-MSS301
3/4" ROUND AMBER CLEAR LED (6)	3281-MSS284	3/4" ROUND AMBER CLEAR LED (6)	3281-MSS302
UNDERLIT 3/4" ROUND AMBER CLEAR LED (5/6)	3281-MSS279*	UNDERLIT 3/4" ROUND AMBER CLEAR LED (5)	3281-MSS303

*MEASURES 1" WIDE



SLEEPER PANELS - MACK ANTHEM

3281-MSS276

Designed as OEM replacement. Will fit models with or without fairings. Hardware, lights and harnesses included. Sold in pairs. NOT COMPATIBLE WITH REDESIGNED MACK ANTHEM (PRODUCTION BEGINNING JANUARY 2026)

48" SLEEPERS

PLAIN	3281-MSS292
M5 AMBER LED (4)	3281-MSS293
M5 AMBER CLEAR LED (4)	3281-MSS294
3/4" ROUND AMBER LED (6)	3281-MSS295
3/4" ROUND AMBER CLEAR LED (6)	3281-MSS296
UNDERLIT 3/4" ROUND AMBER CLEAR LED (6)	3281-MSS297

70" SLEEPERS

PLAIN	3281-MSS273
M5 AMBER LED (7)	3281-MSS274
M5 AMBER CLEAR LED (7)	3281-MSS275
3/4" ROUND AMBER LED (9)	3281-MSS276
3/4" ROUND AMBER CLEAR LED (9)	3281-MSS277
UNDERLIT 3/4" ROUND AMBER CLEAR LED (9)	3281-MSS278

SLEEPER EXTENDERS

For Mack Anthem models. Blank. Sold in pairs. NOT COMPATIBLE WITH REDESIGNED MACK ANTHEM (PRODUCTION BEGINNING JANUARY 2026)

MACK ANTHEM - 48" SLEEPER	3281-MSS304
MACK ANTHEM - 70" SLEEPER	3281-MSS272



SKIRTING KITS - MACK ANTHEM

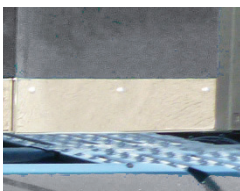
May not work on trucks with chassis fairings due to potential fairing/skirt collision. Kit includes cab, transition/sleeper and extender skirts. Hardware, lights and harnesses included. Also includes 2 block heater mounting plates. Sold as a set. NOT COMPATIBLE WITH REDESIGNED MACK ANTHEM (PRODUCTION BEGINNING JANUARY 2026)

48" SLEEPERS - MEASURES 3" WIDE

PLAIN	3281-MSS286
M5 AMBER LED (3/5/1)	3281-MSS287
M5 AMBER CLEAR LED (3/5/1)	3281-MSS288
3/4" ROUND AMBER LED (4/8/2)	3281-MSS289
3/4" ROUND AMBER CLEAR LED (4/8/2)	3281-MSS290
UNDERLIT 3/4" ROUND AMBER CLEAR LED (5/7/2)	3281-MSS291

70" SLEEPERS - MEASURES 1.5" WIDE

PLAIN	3281-MSS262
M5 AMBER (3/6/1)	3281-MSS263
M5 AMBER CLEAR (3/6/1)	3281-MSS264
3/4" ROUND AMBER (6/11/3)	3281-MSS265
3/4" ROUND AMBER CLEAR (6/11/3)	3281-MSS266
UNDERLIT (6/11/3) - MEASURES 1"	3281-MSS267





ADDITIONAL ACCESSORIES

BUG DEFLECTORS + GRILLE SURROUNDS

The original durable stainless steel bug deflectors. Drilling of mounting holes through the fiberglass hood is required. Provides a classy and more forgiving alternative to plastic models. Bug and grille deflector kits provide full frontal coverage. **GUARANTEED FOR LIFE NOT TO BREAK, RUST OR CORRODE.**

MACK ANTHEM NOT COMPATIBLE WITH REDESIGNED MACK ANTHEM
(PRODUCTION BEGINNING JANUARY 2026) 3281-MSS248

MACK ANTHEM - EXTENDED NOT COMPATIBLE WITH REDESIGNED MACK
ANTHEM (PRODUCTION BEGINNING JANUARY 2026) 3281-MSS249

2016+ CHU613 (NEW STYLE HOOD), PINNACLE 3281-MSS242

CH - WILL NOT WORK ON NEW STYLE HOOD 3281-MSS042

2007+ CX MODELS 3281-MSS136

GRANITE CT/GU - WITH SQUARE HEADLIGHTS 3281-MSSG109

GRANITE (WILL NOT FIT GR64F MODELS) 3281-MSSG042

CH/PINNACLE SET-FORWARD AXLE - GRILLE SURROUND WITH DEFLECTOR 3281-MSS084

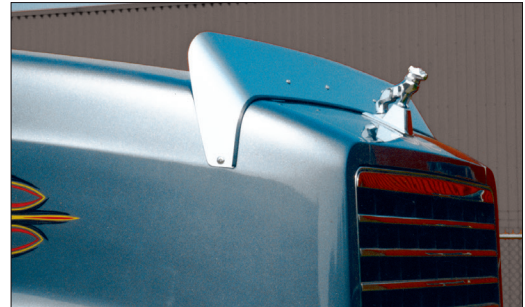
CH/PINNACLE SET-FORWARD AXLE - GRILLE SURROUND ONLY 3281-MSS109

2008+ CX MODELS - GRILLE SURROUND WITH BUG DEFLECTOR 3281-MSS180

TITAN 3281-MSS204



3281-MSS180



3281-MSS042



3281-MSS242 SHOWN WITH 3281-MSS084



3281-MSSG042



3281-MSS204



3281-MSS248



3281-MSS249



3281-MSS203

FENDER GUARDS

The best defense against road debris and the effects of high mileage wear and tear. Fasten using supplied 3M two-sided tape and hardware. Sold in pairs.

MACK ANTHEM NOT COMPATIBLE WITH REDESIGNED MACK ANTHEM (PRODUCTION BEGINNING JANUARY 2026)	3281-MSS253
2017+ PINNACLE SET-FORWARD AXLE - UNDER HEADLIGHT	3281-MSS243
CH SET-FORWARD AXLE MODELS - UNDER HEADLIGHT	3281-MSS085
TITAN - UNDER HEADLIGHT	3281-MSS203
2008+ GU813	3281-MSS183
2008+ GU713	3281-MSS238



3281-MSS085



3281-MSS253



3281-MSS183



3281-MSS238



3281-MSS243



3281-MSS251



3281-MSS006



3281-MSS001



3281-MSS129

SUNVISORS + TRIM

There are lots of places you want to soak in the sun - but your cab isn't one of them. Our extended sunvisors help keep the cab cooler while reducing eye strain. OEM replacement, made of durable stainless steel. Some visors require drilling. Brackets and hardware included.

MACK ANTHEM - WITH 3/4" ROUND AMBER LED - 12" 3281-MSS252
NOT COMPATIBLE WITH REDESIGNED MACK ANTHEM (PRODUCTION BEGINNING JANUARY 2026)

MACK ANTHEM - WITH 3/4" ROUND AMBER CLEAR LED - 12" 3281-MSS251
NOT COMPATIBLE WITH REDESIGNED MACK ANTHEM (PRODUCTION BEGINNING JANUARY 2026)

MACK ANTHEM - WITH M5 AMBER LED - 12" 3281-MSS260
NOT COMPATIBLE WITH REDESIGNED MACK ANTHEM (PRODUCTION BEGINNING JANUARY 2026)

MACK ANTHEM - WITH M5 AMBER CLEAR LED - 12" 3281-MSS261
NOT COMPATIBLE WITH REDESIGNED MACK ANTHEM (PRODUCTION BEGINNING JANUARY 2026)

CH, CL, CX MODELS WITH ROOF FAIRING - 9" 3281-MSS006

CH, CL, CX, CT, GU GRANITE & VISION MODELS WITHOUT ROOF FAIRING - 10.21" OEM REPLACEMENT 3281-MSS087*

CH, CL, CX, CT, GU GRANITE & VISION MODELS WITHOUT ROOF FAIRING - 13" EXTRA DEEP 3281-MSS129*

CH, CL, CX GRANITE MODELS WITHOUT ROOF FAIRING - 9.8" 3281-MSS001

R-SERIES - 7.5" 3281-MSS003

CX SUNVISOR TRIM 3281-MSSV108

*FITS TRUCK WITH OR WITHOUT SLEEPERS



3281-MSSV108

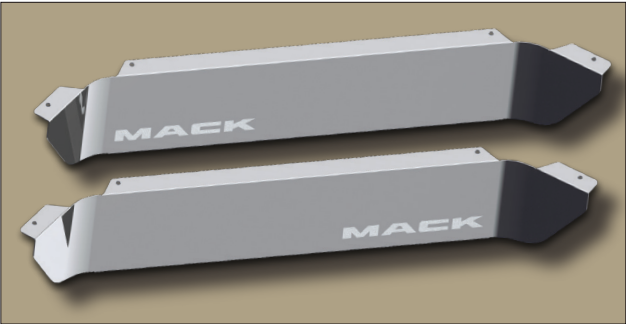


3281-MSS003

KICK PLATES

Fits on the rocker panel below the cab doors. Available plain, with logo etched or cutout. Fastens using supplied hardware and 3M two-sided tape. Sold in pairs. NOT COMPATIBLE WITH REDESIGNED MACK ANTHEM (PRODUCTION BEGINNING JANUARY 2026)

2015+ MODELS - WITH ETCHED MACK LOGO	3281-MSS235
2015+ MODELS - WITH LASER CUT MACK LOGO	3281-MSS241
2015+ MODELS - WITH LASER CUT MACK ANTHEM LOGO	3281-MSS268
CH, CL, CX & GRANITE - WITH CLASSIC MACK ETCHED LOGO	3281-MSSV109
CH, CL, CX & GRANITE - WITH CLASSIC MACK LASER CUT LOGO	3281-MSSV109C
2008+ CH, CL, CX & GRANITE - PLAIN	3281-MSS153
GRANITE - WITH LASER CUT GRANITE LOGO	3281-MSS190
TITAN - WITH LASER CUT TITAN LOGO	3281-MSS201



3281-MSS235



3281-MSS153



3281-MSSV109



3281-MSSV109C



3281-MSS241

REAR FRAME COVERS

Add that stainless steel look and protection to the rear frame. Sold individually, the rear frame cover fastens using supplied hardware.

CH MODELS - PLAIN	3281-MSS117
2015+ CH MODELS - WITH LASER CUT MACK LOGO	3281-MSS229
2015+ CH MODELS - WITH ETCHED MACK LOGO	3281-MSS234
CH MODELS - WITH CLASSIC MACK LASER CUT LOGO	3281-MSS113



3281-MSS234



3281-MSS229



3281-MSS158

HEAT SHIELD CAP

Replaces the black OEM cover that hides the diesel particulate filter with a high-quality 304 stainless steel version. Fastens using existing hardware. Passenger side only. Sold individually.

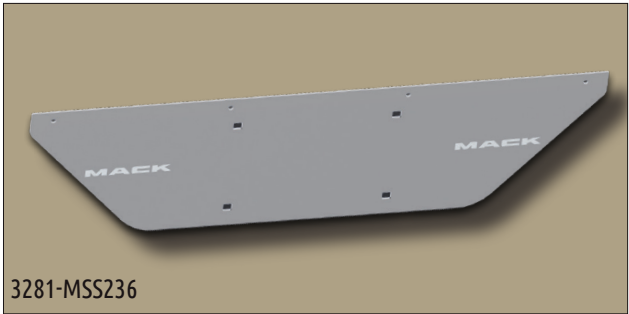
2011+ GU813 MODELS - WITH LOGO CUTOUT MEASURES 23.38" WIDE BY 19.86" HIGH	3281-MSS217
TITAN MODELS - PLAIN	3281-MSS177
PRE-2011 GU713, GU813 - PLAIN MEASURES 24.43" WIDE BY 21.04" HIGH	3281-MSS181
2008+ CHU/CXU - PLAIN MEASURES 24.88" WIDE BY 26.08" HIGH	3281-MSS158
2008+ CHU/CXU - WITH MACK & BULLDOG CUTOUT MEASURES 24.88" WIDE BY 26.08" HIGH	3281-MSS144



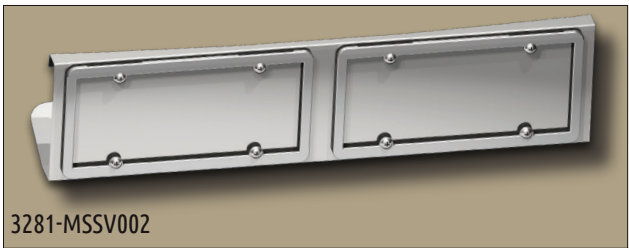
3281-MSS181



3281-MSS073



3281-MSS236



3281-MSSV002



3281-MSS231 WITH 3281-MSS232

LICENSE PLATE HOLDERS

Sold individually. License plate bezels are included. For the bumper face license plate holders, they attach using existing bumper bolts. Under bumper license plate holders are hinged to hang under the bumper.

2015+ MODELS - WITH ETCHED LOGO - 1 TAG	3281-MSS236
2015+ MODELS - WITH LOGO CUTOUTS - 1 TAG	3281-MSS231
PRE-2015 MODELS - WITH LOGO CUTOUTS - 1 TAG	3281-MSS073
OVAL LIGHT SWING PLATE	3281-MSS039
VISION MODELS WITH PLASTIC BUMPERS - 2 TAGS	3281-MSSV002
LICENSE PLATE - WITH NEW MACK LOGO CUTOUT	3281-MSS232



3281-MSS171



DOOR WINDOW DEFLECTOR

The door window deflector measures 23" long. Attaches using supplied 3M two-sided tape. Sold in pairs

GRANITE	3281-MSSG024
---------	--------------

DOOR WINDOW SHADE

Attaches using supplied 3M two-sided tape and optional hardware. Sold in pairs. NOT COMPATIBLE WITH REDESIGNED MACK ANTHEM (PRODUCTION BEGINNING JANUARY 2026)

ANTHEM, CH, GRANITE & VISION MODELS	3281-MSS171
-------------------------------------	-------------

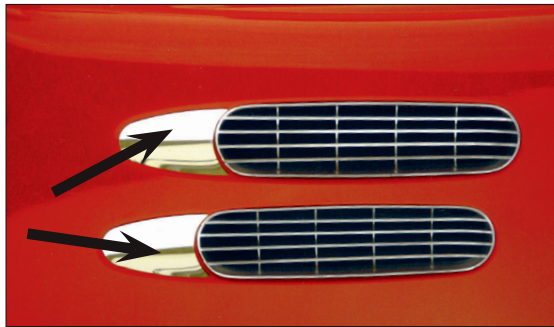


INTAKE TRIM

Fastens around the intake grille using supplied 3M two-sided tape. Sold in sets.

GRANITE

3281-MSSG106



HOOD AIR INTAKE TRIM

Fits indent behind each air intake grille. Fastens with supplied 3M two-sided tape. Sold in 4 piece sets.

CX MODELS

3281-MSSV106



DOOR HANDLE SURROUND TRIM

Fastens using supplied 3M two-sided tape. Sold in pairs.

CH MODELS

3281-MSS082



HOOD INTAKE GRILLE + TRIM

Sold in pairs. Attaches with supplied 3M two-sided tape or hardware.

CH AIR INTAKE GRILLE, OEM REPLACEMENT

3281-MSS088

CH INTAKE TRIM

3281-MSS083



BUNK VENT TRIM + COVERS

Fastens with supplied 3M two-sided tape.

CH, CL, CX BUNK VENT COVERS - FIT OVER PAINTED VENTS. SOLD IN 3 PIECE SET FOR BUNK & DRIVER DOOR VENT. 9.25" X 3.75"

3281-MSSV110

CH, CL, CX BUNK VENT TRIM - SOLD IN PAIRS

3281-MSS081

UNIVERSAL BACKUP LIGHT SHIELD + BRACKET

Adds stainless steel look and style to backup lights. Hardware included. Sold in pairs.

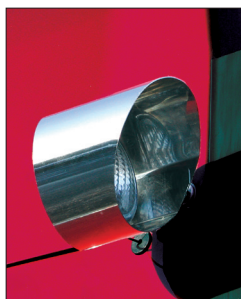
SHIELD

(BOTH ENDS OPEN)

3281-DUABULS

BRACKET

3281-DUABULB



PASSENGER DOOR WINDOW TRIM

Fastens using supplied 3M two-sided tape. Sold individually.

2012+ GRANITE

3281-MSS227

PRE-2012 GRANITE
(16.5" X 10")

3281-MSSG072

HEADLIGHT VISOR

for CH set-forward axle models. Fastens using supplied hardware. Sold in pairs.

CH SET-FORWARD AXLE

3281-MSS092



BUNK ACCESS DOOR HANDLE TRIM

Fastens using supplied 3M two-sided tape. Sold in sets.

UNIVERSAL

3281-MSS074D

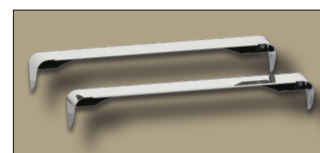


CAB DOOR HANDLE TRIM

Fastens using supplied 3M two-sided tape. Sold in pairs.

UNIVERSAL

3281-MSS074C



CUSTOM DEALERSHIP POSTERS

Custom posters are now available to help increase sales of stainless steel accessories! Available in 2 sizes - 24"x36", and 30"x48" - both portrait or landscape. - complete with accessory listing. These posters are available to authorized Mack dealerships only. Contact one of our customer service representatives to order or learn more at 1-877-884-8555 or inquiries@dietersaccessories.com



STAINLESS STEEL PRODUCTS GUARANTEED TO OUTSHINE AND OUTLAST

DEALERSHIP LOGO HERE

SUNVISOR 3/4" ROUND AMBER CLEAR LED - 12"	3281-MSS251
BUG DEFLECTOR - EXTENDED	3281-MSS249
FENDER GUARDS	3281-MSS293
KICK PANEL WITH MACK LOGO CUTOUT	3281-MSS241
SKIRTING KIT - CAB, SLEEPER & EXTENDER, UNDERLIT WITH 3/4" ROUND AMBER CLEAR LED LIGHTS	3281-MSS267
UPPER FAIRING TRIM KIT - INCLUDES STEP COVER	3281-MSS245
LOWER FAIRING TRIM KIT	3281-MSS259
DOOR WINDOW SHADES	3281-MSS171
SLEEPER BUNK DOOR HANDLE TRIM	3281-MSS247
AIR INTAKE ACCENTS - RECESSED INSERTS (4 PIECE)	3281-MSS250
BUMPER SCREEN	3281-MSS254

DIETER'S
Our Reputation is Stainless!



DEALERSHIP LOGO HERE

STAINLESS STEEL PRODUCTS GUARANTEED TO OUTSHINE AND OUTLAST.

DIETER'S
Our Reputation is Stainless!

SUNVISOR 3/4" ROUND AMBER CLEAR LED - 12"	3281-MSS251	LOWER FAIRING TRIM KIT	3281-MSS259
BUG DEFLECTOR - EXTENDED	3281-MSS249	DOOR WINDOW SHADES	3281-MSS171
FENDER GUARDS	3281-MSS293	SLEEPER BUNK DOOR HANDLE TRIM	3281-MSS247
KICK PANEL WITH MACK LOGO CUTOUT	3281-MSS241	AIR INTAKE ACCENTS - RECESSED INSERTS (4 PIECE)	3281-MSS250
SKIRTING KIT - CAB, SLEEPER & EXTENDER, UNDERLIT WITH 3/4" ROUND AMBER CLEAR LED LIGHTS	3281-MSS267	BUMPER SCREEN	3281-MSS254
UPPER FAIRING TRIM KIT - INCLUDES STEP COVER	3281-MSS245		

DIETER'S
Our Reputation is Stainless!

Two programs to serve you better. You may order Dieter's high quality accessories through the PDC program or the DSP program. Either way your customers will receive the highest quality products that are designed to last through first ownership and beyond.

OEM certified.... Owner Satisfied.

**OUT WORK.
OUT PLAY.
OUT DRIVE.
OUT LAST.
OUT SHINE.**



OEM certified, owner operator approved...
Our stainless steel products are guaranteed to Outshine and Outlast.

dietersaccessories.com

1-877-884-8555

inquiries@dietersaccessories.com

VOLUME XII

COPYRIGHT © 2020, ALL RIGHTS RESERVED
All trademark, product names or logos cited or displayed herein are the property of their respective owners.