



TOP MOVING PRODUCTS

COUPLINGS



1200A / 10006048
AIR COUPLING KIT

Standard Installation Kit:

- **1200A:** 1200 Coupling, 501 Bolt Kit, 281 Air Chamber, 267 Air Chamber Adapter Bracket, 271 Thimble

SPECIFICATIONS

Maximum Gross Trailer Weight:	100,000 lbs.	(45,359 kg)
Maximum Tongue Weight:	20,000 lbs.	(9,072 kg)
Ultimate Latch Capacity:	60,000 lbs.	(27,216 kg)
Maximum Eye X-Section:	1 13/16 in.	(46 mm)
Minimum Eye Opening:	2 3/8 in.	(60 mm)
Unit Weight:	30.5 lbs.	(13.8 kg)



1300A / 10006049
AIR COUPLING KIT

Standard Installation Kit:

- **1300A:** 1300 Coupling, 502 Bolt Kit, 281 Air Chamber, 467 Air Chamber Adapter Bracket, 271 Thimble

SPECIFICATIONS

Maximum Gross Trailer Weight:	100,000 lbs.	(45,359 kg)
Maximum Tongue Weight:	20,000 lbs.	(9,072 kg)
Ultimate Latch Capacity:	60,000 lbs.	(27,216 kg)
Maximum Eye X-Section:	1 13/16 in.	(46 mm)
Minimum Eye Opening:	2 3/8 in.	(60 mm)
Unit Weight:	30.5 lbs.	(13.8 kg)



150-1 / 10004673
NON-AIR COUPLING KIT

Coupling and Ball Combinations:

- **150-1:** 150 coupling & 156 ball capacity MGTW: 10,000 lbs. (4,535 kg)

SPECIFICATIONS

Maximum Gross Trailer Weight:	20,000 lbs.	(9,072 kg)
Maximum Tongue Weight:	2,500 lbs.	(1,134 kg)
Ultimate Latch Capacity:	5,000 lbs.	(2,268 kg)
Maximum Eye X-Section:	1 13/16 in.	(46 mm)
Minimum Eye Opening:	2 3/8 in.	(60 mm)
Unit Weight:	14.7 lbs.	(6.7 kg)



2200A / 10004690
AIR COUPLING KIT

Standard Installation Kit:

- **2200A:** 2200 Coupling, 281 Air Chamber, 267 Air Chamber Adapter Bracket, 271 Thimble

SPECIFICATIONS

Maximum Gross Trailer Weight:	100,000 lbs.	(45,359 kg)
Maximum Tongue Weight:	20,000 lbs.	(9,072 kg)
Ultimate Latch Capacity:	60,000 lbs.	(27,216 kg)
Maximum Eye X-Section:	1 13/16 in.	(46 mm)
Minimum Eye Opening:	2 3/8 in.	(60 mm)
Unit Weight:	29 lbs.	(13.2 kg)



2200ELA / 10004695
AIR COUPLING KIT

Standard Installation Kit:

- **2200ELA:** 2200EL Coupling, 501 Bolt Kit, 281 Air Chamber, 267 Air Chamber Adapter Bracket, 271 Thimble

SPECIFICATIONS

Maximum Gross Trailer Weight:	100,000 lbs.	(45,359 kg)
Maximum Tongue Weight:	20,000 lbs.	(9,072 kg)
Ultimate Latch Capacity:	60,000 lbs.	(27,216 kg)
Maximum Eye X-Section:	1 13/16 in.	(46 mm)
Minimum Eye Opening:	2 3/8 in.	(60 mm)
Unit Weight:	28.3 lbs.	(12.8 kg)



2300A / 10004706
AIR COUPLING KIT

Standard Installation Kit:

- **2300A:** 2300 Coupling, 502 Bolt Kit, 281 Air Chamber, 467 Air Chamber Adapter Bracket, 271 Thimble

SPECIFICATIONS

Maximum Gross Trailer Weight:	100,000 lbs.	(45,359 kg)
Maximum Tongue Weight:	20,000 lbs.	(9,072 kg)
Ultimate Latch Capacity:	60,000 lbs.	(27,216 kg)
Maximum Eye X-Section:	1 13/16 in.	(46 mm)
Minimum Eye Opening:	2 3/8 in.	(60 mm)
Unit Weight:	30.3 lbs.	(13.7 kg)



2400A / 10004715
AIR COUPLING KIT

Standard Installation Kit:

- **2400A:** 2400 Coupling, 508 Bolt Kit, 281 Air Chamber, 467 Air Chamber Adapter Bracket, 271 Thimble

SPECIFICATIONS

Maximum Gross Trailer Weight:	110,000 lbs.	(49,895 kg)
Maximum Tongue Weight:	20,000 lbs.	(9,072 kg)
Ultimate Latch Capacity:	60,000 lbs.	(27,216 kg)
Maximum Eye X-Section:	1 13/16 in.	(46 mm)
Minimum Eye Opening:	2 3/8 in.	(60 mm)
Unit Weight:	34.3 lbs.	(15.6 kg)

DRAWBAR EYES



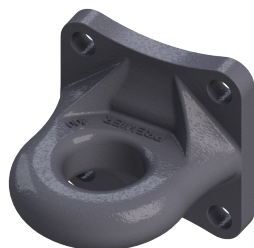
207S / 10000763
SWIVEL DRAWBAR EYE

Parts Included:

- 207S: 207 Drawbar Eye, 208 Snap Ring, 416 Locknut

SPECIFICATIONS

Maximum Gross Trailer Weight:	90,000 lbs.	(40,823 kg)
Maximum Tongue Weight:	2,500 lbs.	(1,134 kg)
Unit Weight:	24.4 lbs.	(11.1 kg)
Drawbar Eye Dimensions	2 3/8" ID, Shaft 2" OD x 11 3/8" L	



200 / 10000735
BOLT-ON DRAWBAR EYE

SPECIFICATIONS

Maximum Gross Trailer Weight:	100,000 lbs.	(45,359 kg)
Maximum Tongue Weight:	15,000 lbs.	(6,804 kg)
Inside Diameter:	2 3/8 in.	(60 mm)
Unit Weight:	16 lbs.	(7.3 kg)



2 / 10000732
WELD-ON DRAWBAR EYE

SPECIFICATIONS

Maximum Gross Trailer Weight:	12,000 lbs.	(5,443 kg)
Maximum Tongue Weight:	1,800 lbs.	(816 kg)
Inside Diameter:	2 in.	(51 mm)
Unit Weight:	3 lbs.	(1.4 kg)

JACKS



800P-15-829 / 10000679
Utility Jack

Features:

- Quick action, spring-activated, folding handle that seats in a positive position for travel.
- Strong, precision fit square tubing helps reduce penetration of outside contaminants.
- Tube support collar on outside tube for added strength.
- Oil cup for convenient lubrication of power screw.

SPECIFICATIONS

Maximum Capacity Operational:	2,500 lbs.	(1,134 kg)
Maximum Capacity Static:	5,000 lbs.	(2,268 kg)

FRONT END ASSEMBLIES



536B/ 10000873
Front End Housing Assembly

Designed for 207K, 207S, 307K, 307S & 405S Swivel Drawbar Eyes Only

- 536B: 536 Housing, 437A Poly Bushings & 349 Washer

SPECIFICATIONS

Inside Diameter:	2 5/8 in.	(67 mm)
Outside Diameter:	5 in.	(127 mm)
Length:	8 1/4 in.	(210 mm)

HINGE ASSEMBLIES



440A / 10000988
PAIR HINGES
POLY BUSHINGS

Parts Included Per Hinge:

- 440A: 351 Bolt/Nut (2), 424L/424R Housing, 441 Bracket, 442 Pin, 445 Adjustable Shoe, 447 Bolt (2), 448A Bushing, 653 Snap Ring (2)

SPECIFICATIONS

Maximum Gross Trailer Weight:	100,000 lbs.	(45,359 kg)
Unit Weight:	53.2 lbs.	(24.1 kg)

A DIVISION OF **HIGH BAR BRANDS, LLC**



**HIGH BAR
BRANDS**

19500 SW TETON AVENUE TUALATIN, OR 97062
(503) 234-9202 | (800) 255-5387
www.highbarbrands.com